



NGO Profile

Matri Seva Samiti



<https://matrisevasamiti.ngo>



9415451910, 9838291910



matrisevasamiti1910@gmail.com



Naika Chhatnag Road Near Ram Shiv Colony,
Jhunsi, Prayagraj, UP, 211019



Table of Contents

Title	Page No.
About the Organization	01
Mission, Vision, Core Values	02
Focus Area	03
Target Beneficiary	04
Geographical Location	05
Team Members	06
What Makes Us Stand Out	07
Alignment With SDG	08
Our Approach	09
Sustainability Measure	10
Model of Scaling	11
Strengthening Linkages	12
Contact Information	13

About the Organization

Matri Seva Samiti is a registered not-for-profit organization established in the year 2021-2022 under the Society Registration Act with registration number ALL/06316/2021-2022. Headquartered in Jhunsi, Prayagraj, Uttar Pradesh, the organization is dedicated to empowering marginalized communities, especially women, children, and the underprivileged, through holistic development initiatives.

Since its inception, Matri Seva Samiti has worked at the grassroots level to address some of the most pressing issues faced by vulnerable populations, such as lack of access to education, poor healthcare, unemployment, gender inequality, and environmental degradation. The organization operates with a belief that true development is inclusive, participatory, and sustainable—and that lasting change comes from within communities themselves.



Driven by a strong sense of compassion, social responsibility, and a mission to uplift lives, Matri Seva Samiti is creating tangible impacts through targeted interventions across education, health, women's empowerment, livelihood, and environmental conservation.



Vision

A just, inclusive, and empowered society where every individual—especially women, children, and the underprivileged—has access to education, health, dignity, and sustainable livelihood opportunities.



Mission

To uplift marginalized communities by delivering holistic development programs in health, education, livelihood, and women empowerment, while fostering environmental sustainability and active community participation.



Core values



Empathy



Empowerment



Collaboration



Inclusiveness



Sustainability



Innovation



Integrity

Our Focus Area



Education & Literacy



Healthcare & Hygiene



Women
Empowerment



Livelihood & Skill
Development



Environmental
Sustainability



Community
Mobilization



Leadership
Development



Target Beneficiaries



Women & Girls



Children & Youth

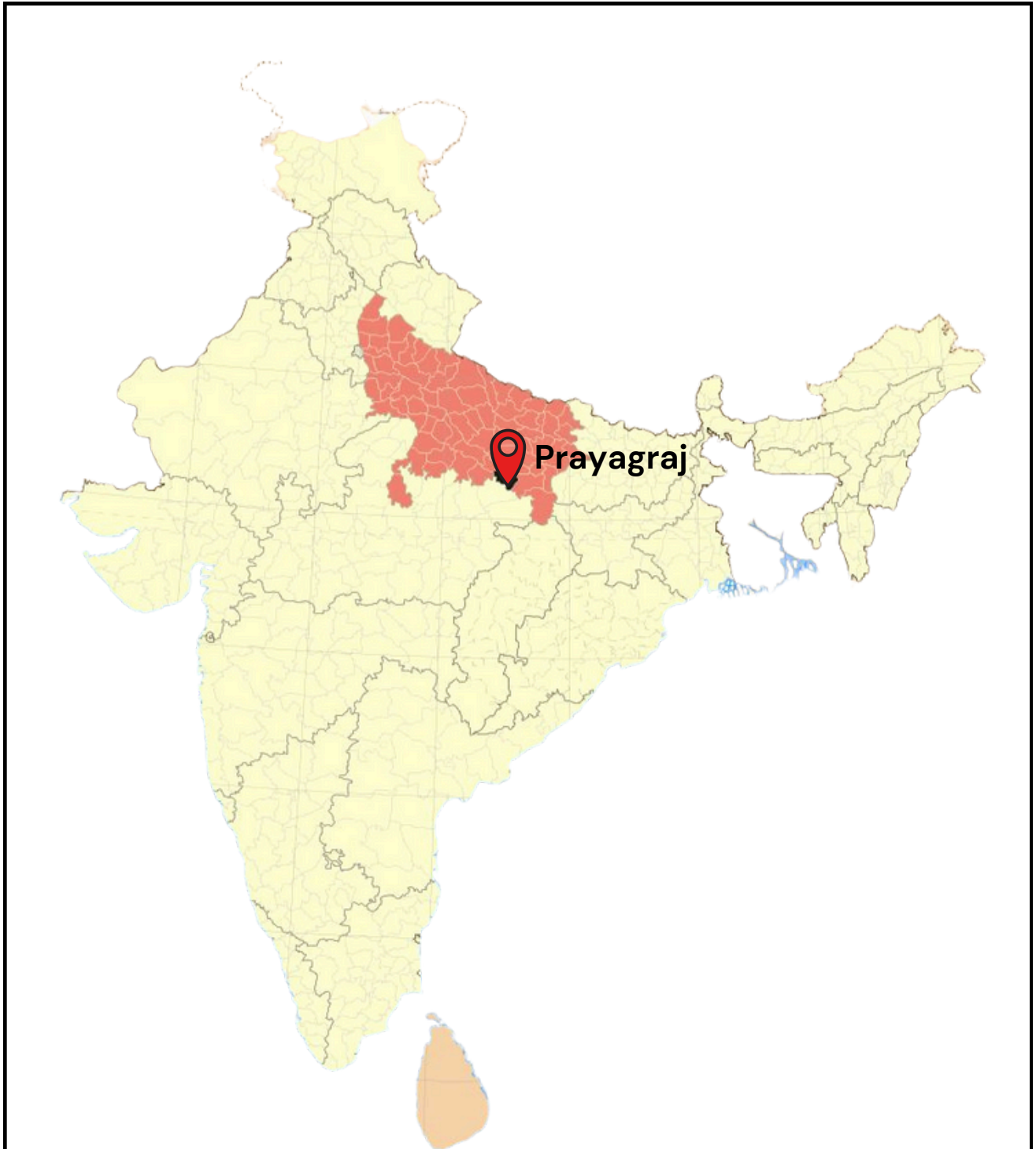


**Elderly &
Differently Abled**



**Rural & Urban Poor
Communities**

Geographical Reach



Team Members



Gyan Shankar Pal
(President)



Dheeraj Raj Pal
(Vice-President)



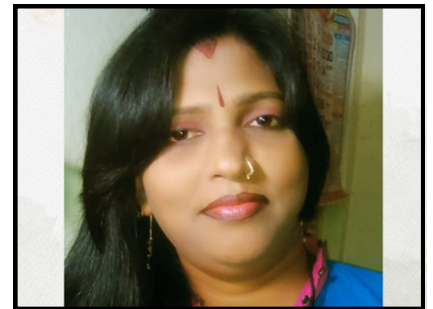
Narendra Nath Pal
(Managing Secretary)



Mamta Pal
(Treasurer)



Priyanka Pal
(Member)



Sadhana Pal
(Member)



Sumitra Pal
(Member)



What Makes Us Stand Out



Purpose-led
Organization



Trusted and Reliable
Collaborator



Committed to Creating
Tangible Social Impact



Upholding Transparency
and Responsibility



Aligned with the
Sustainable Development
Goals



Strong Presence at the
Grassroots with Deep
Community Involvement

Alignment With SDGs



Matri Seva Samiti empowers underprivileged communities through livelihood support and self-help group formation to break the cycle of poverty.



We promote community health through maternal care, adolescent health education, and awareness on nutrition and sanitation.



Our early childhood education centres and remedial programs ensure equitable learning opportunities for children from marginalized backgrounds.



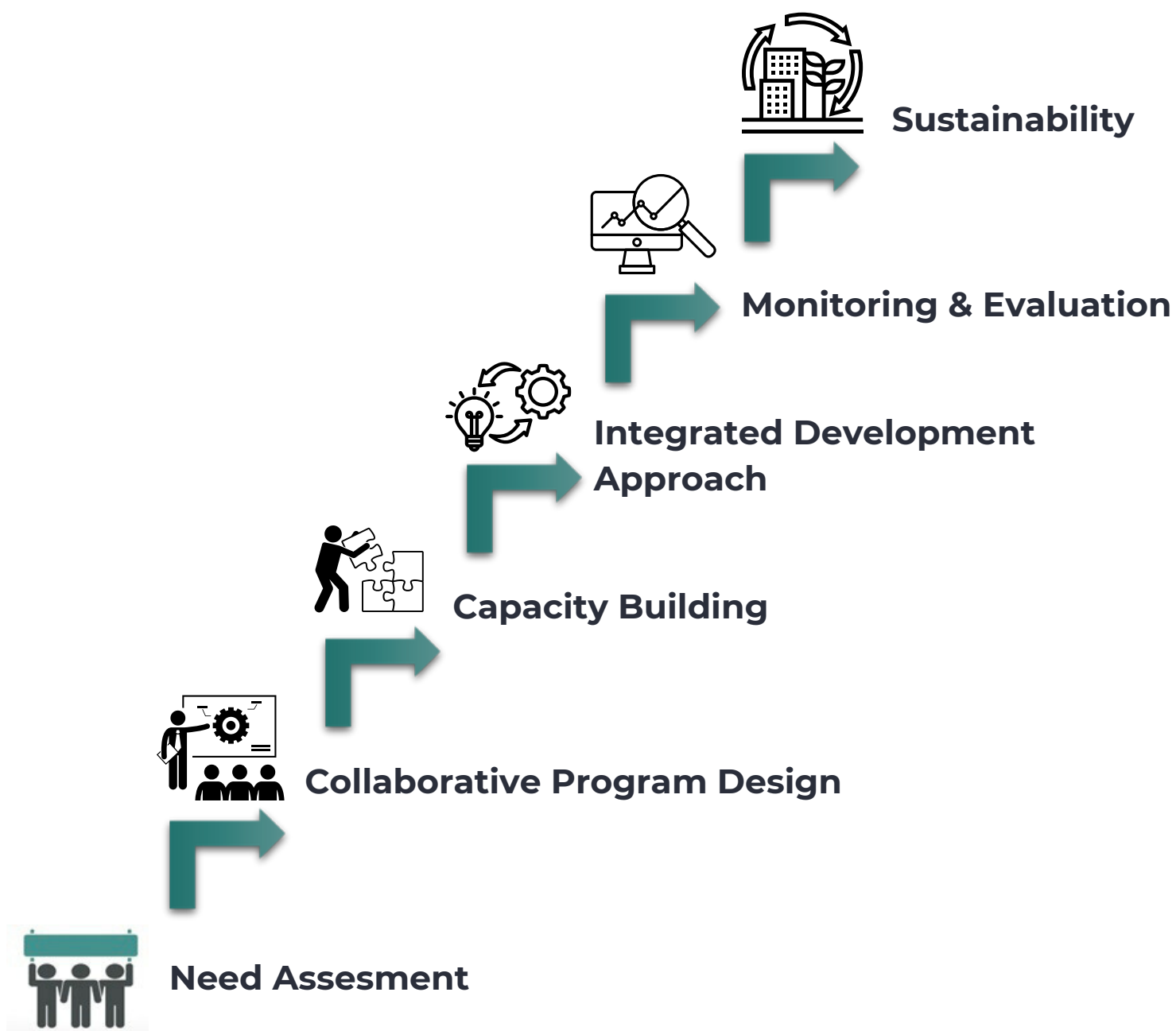
We advance women's rights through leadership training, gender sensitization, and economic empowerment programs.



We collaborate with government bodies, civil society, and development partners to scale sustainable impact across sectors.



Our Approach





Sustainability Measures in Matri Seva Samiti's Approach

Community Ownership & Participation:

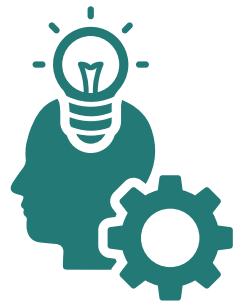
We place the community at the heart of our programs. Through participatory rural appraisal, needs assessments, and inclusion of local voices in planning and decision-making, we foster a sense of responsibility and collective ownership among beneficiaries.

Women, adolescents, and community leaders are encouraged to co-lead activities, strengthening their roles as agents of change.



Capacity Building of Local Stakeholders

We invest in the capacity enhancement of frontline workers, peer educators, SHG members, school teachers, and adolescent leaders. By building their knowledge and leadership, we create a cadre of trained individuals who can continue the mission independently.



Integrated & Multi-thematic Approach

By addressing interconnected issues—such as health, education, gender, and livelihood—through a single platform, we reduce redundancy and maximize impact. This integration ensures that development gains in one area reinforce progress in others.



Monitoring, Learning, and Adaptation

A robust MEL (Monitoring, Evaluation, and Learning) system helps us track outcomes, adapt interventions, and document best practices. These insights are shared with stakeholders to inform replication, scaling, and policy-level advocacy.





Model of Scaling





Strengthening Linkages with Local Systems

Health System Integration

- Supported maternal and child health initiatives by working with ASHA and ANM workers.
- Enabled access to government schemes such as Janani Suraksha Yojana.

Strengthening Education Ecosystem

- Collaborated with local schools and education officers to run bridge courses, remedial classes, and school readiness programs for out-of-school children.

Supporting Anganwadi Centres

- Enhanced the quality of early childhood education and nutrition services by training Anganwadi Workers (AWWs).

Strengthening Local Governance & Women's Institutions

- Enabled the formation and nurturing of Self-Help Groups (SHGs) and their integration into federations and producer groups.



Contact Us At:



<https://www.matrisevasamiti.ngo>



9415451910, 9838291910



matrisevasamiti1910@gmail.com



Naika Chhatnag Road Near Ram Shiv Colony,
Jhunsi, Prayagraj, UP, 211019